

The Velocity Adjustor™
Subfloor Air Balance System
User Guide

Contents

Overview	1
Installation	2
Warranty Information	3

Overview

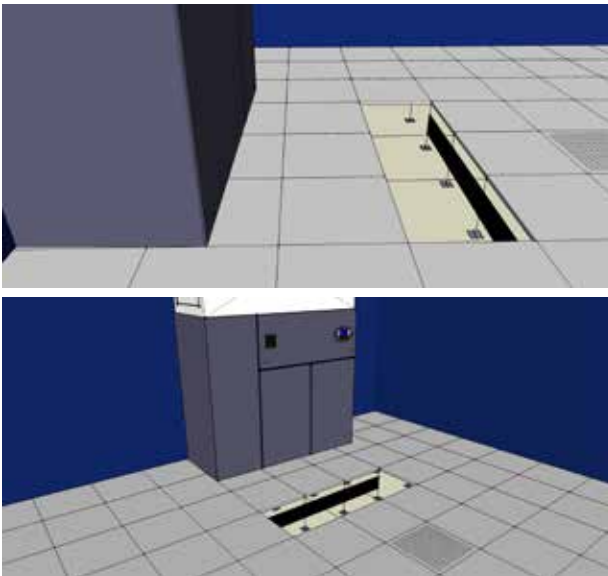
The Subzero Engineering Velocity Adjustor is the most efficient way to balance subfloor air pressure in data centers. The Velocity Adjustor is designed to slow subfloor air velocity to increase pressure. This simple, scientific solution will balance subfloor pressure, which enables supply air at any place in the data center.

This completely non-flammable cover ensures that the Velocity Adjustor is completely safe to use in a supply plenum.

The Velocity Adjustor comes in three sizes that accommodate most common subfloor height.

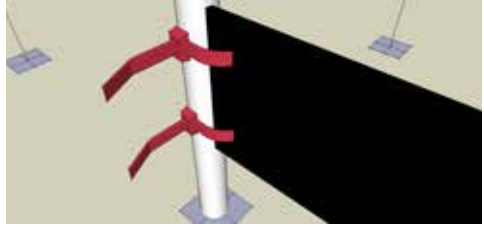


Figure 1



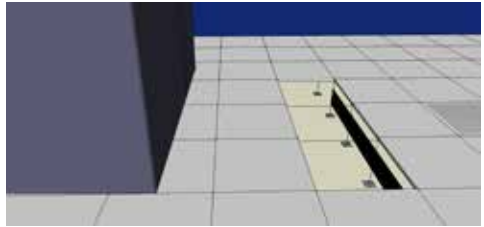
1 Installation

The Velocity Adjustor is easy to install. We recommend using cable ties to attach to the four corners of the Velocity Adjustor and the stanchions.



Install the Velocity Adjustor no closer than 4 feet from the AC unit discharge.

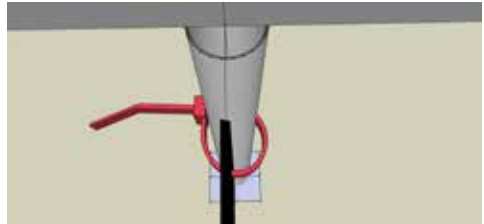
The preferred distance is 5 to 8 feet.



5 to 8 feet from the AC unit discharge

Position the Velocity Adjustor half way between the bottom of the floor and the bottom of the raised floor.

Pull the cable ties until it is firm or taut.



Warranty Information

Subzero Engineering warrants to the original purchaser that it will, as its sole option, repair or replace this product or any part of this product, if it confirms that the product is defective in materials or workmanship under normal use and maintenance for one year after the purchase date of the product.

This limited 1 (one) year warranty DOES NOT COVER the following:

1. Defects or damage arising from shipping, installation, alterations, accidents, abuse, misuse, lack of proper maintenance and use of anything other than genuine Subzero replacement parts, in all cases whether caused by a contractor, service company, the owner or any other person.
2. Deterioration through normal wear and tear.
3. Damages resulting from abuse or misuse from failure to install or maintain this product in accordance with the written instructions furnished by Subzero Engineering.
4. Use of cleaning products containing calcium hypo chlorite (chlorine), scouring powders or pads shall not be covered.
5. Expense of normal maintenance.
6. All costs of removal, transportation, labor, reinstallation or other costs including postage and/or shipping costs to obtain warranty service shall be paid by the customer.
7. Any liability for consequential or incidental damages, all of which are hereby expressly disclaimed, and implied warranties, including those of merchantability or fitness for purpose intended are specifically excluded. (Some jurisdictions do not allow limitations on how long an implied warranty lasts, or the exclusion or limitation of incidental or consequential damages, so these limitations and exclusions may not apply to you.)
8. Responsibility for compliance with local code requirements are excluded from this warranty. (Since local code requirements vary greatly, distributors, dealers, installation contractors, and users should determine whether there are any code restrictions on the installation or use of a specific product.)

This limited warranty gives you specific legal rights. You may have other statutory rights that vary from state to state or from province to province, in which case this limited warranty does not affect such statutory rights.

Limited Warranty Contact Information

For service under these limited warranties, it is suggested that a claim be made through the contractor or dealer from or through whom the product was purchased, or that a service request (including a description of the product model and of the defect) be sent to the following address:

United States: Subzero Engineering
228 W 12300 S
Denali Bldg. Suite 108
Draper, UT 84020
Attention: Director of Consumer Affairs

For residents of the United States, warranty information may also be obtained by calling: (801) 810-3500

Managing What Matters



SUBZERO ENGINEERING

228 West 12300 South
Denali Bldg. Suite 108
Draper, UT 84020

p	801.810.3500
f	866.810.3509
e	info@subzeroeng.com
w	www.subzeroeng.com

Design and specifications are subject to change without notice.

Proprietary Notice: The information contained in this user guide is the sole property of Subzero Engineering. Any reproduction in part, or as a whole without the written permission of Subzero Engineering is prohibited.

V 1.1_06/26/2013

© 2013 Subzero Engineering. All rights reserved.